



Data sheet

DATE OF ISSUE JUNE 2015

individualdecor

Guidelines for data preparation by FunderMax Individualdekor

Please note that a special digital printing process is deployed at FunderMax Individualdekor, which differs from classical printing processes such as offset printing or gravure printing.

Therefore, before you begin planning, we recommend that you read this Data Sheet. If you follow these recommendations, it will facilitate the production of your individually designed material.

GENERAL REQUIREMENTS

How to send your data to FunderMax

Preferably via online storage services. Example:
 Dropbox: www.dropbox.com WeTransfer: www.wetransfer.com
 Email: individualdruck@fundermax.biz

Please note: Send us data that is ready to print, not unfinished working versions!

If you are working with pixel data

Classic image applications (photos made with digital cameras) consist of image points. After being processed on the computer, JPEG images must absolutely be saved as TIFF (.tif) or Photoshop PSD (.psd).

For TIFF files, use LZW compression. PSD or TIFF files cannot include any hidden layers or adjustment layers. Please put all the pixel data into one layer before sending.

We recommend using „ISO Coated v2.icc“ as the colour space.

Otherwise, RGB or CMYK data with an embedded colour profile.

Recommended resolution

The resolution of your graphics and images should be at least 90 dpi and maximum 180 dpi, depending on the print size.

We recommend that you do not make images sharper or convert them to a higher resolution!

If you are working with vector data

The advantage of vector data is that they do not consist of image points and can therefore be enlarged without any loss of quality.

We recommend using: „ISO Coated v2.icc“ as the colour space.
 Create your data 1:1 (or alternatively 1:10) in its final size. Keep the file as compact as possible (file size as well as the number of object and anchor points). Please convert embedded images into the same colour space of the vector file beforehand.

Save the data as a PDF or AI File. Please do not use any transparencies.

Spot colours and special colours

FunderMax Individualdekor opens up innumerable design options to you.

However, please note that we do not rework your first print, but print it just as we receive it.

Digital proofs in accordance with offset or other printing standards are not combinable with our printing process and it is therefore unfortunately not possible to carry out colour adjustments relating to exact RAL, NCS, Pantone and other spot colours.



SUPPORTED FILE FORMATS

Vector data

Adobe Illustrator to Version CS5	.ai, Illustrator .eps, Illustrator .pdf
Macromedia Freehand	Only as PDF
Corel Draw - export to Illustrator-file	.ai, .eps

Pixel data

TIF or PSD, please note, no JPEG, no RAW	
--	--

Data from layout programmes

QuarkXPress to Version 6	Only as PDF
Adobe Indesign to Version CS4	.ind, .indd
PDF	PDF X-1a, X-3, X-4 only CMYK, with ISO Coated v2 as Output Intend

No support for AutoCAD, dwg!



RECOMMENDATIONS

- f* The quality of your FunderMax Individualdecor depends on the quality of your print data.
- f* Work together with a professional graphic designer.
- f* Please do not send us any unfinished working versions, only data that is ready for printing.
- f* Use «ISO Coated v2.icc» as the colour space for pixel data and vector data.
- f* Don't make graphics and images sharper or convert them to a higher resolution later on.



3 formats in an individual style

We finish your individually designed panels in the following formats.

- Door size
- Large size
- Jumbo size



 **Decorative Laminates**

 **Compact Interior**

 **Decorative Laminates**

 **Compact Interior**

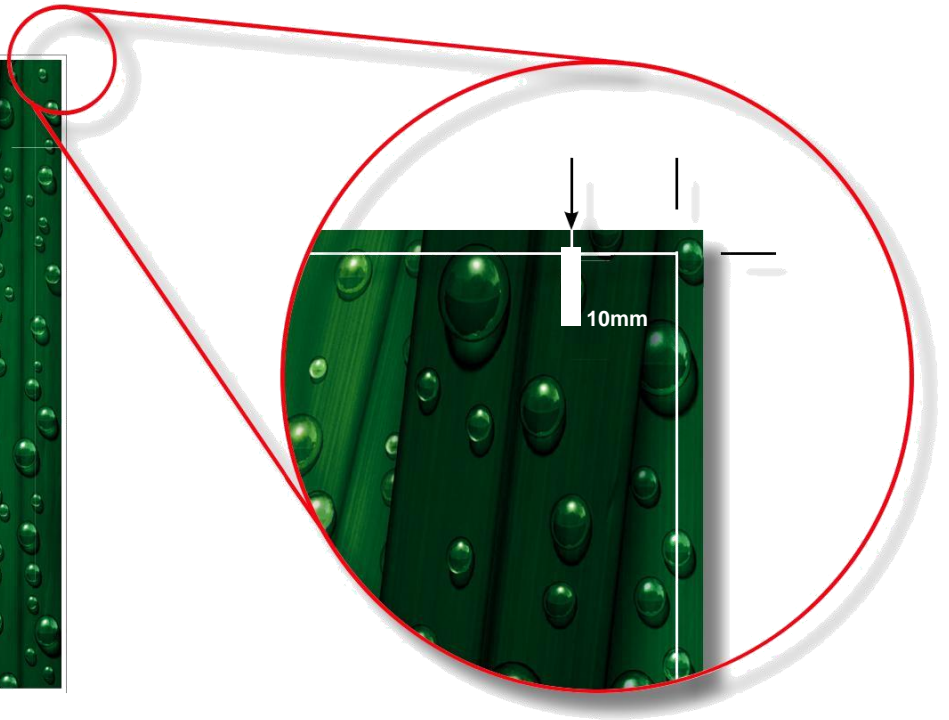
 **Compact Exterior**

 **Decorative Laminates**

 **Compact Interior**

 **Compact Exterior**





PLEASE NOTE: Exaggerated illustration



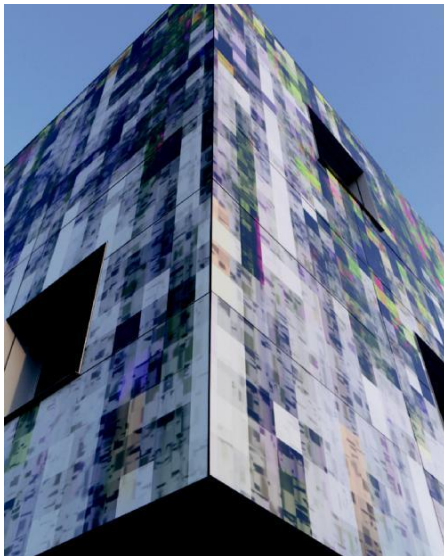
PLEASE NOTE:

- The bleed can extend beyond the printable area. In this case, you mount the trim marks with a 5-10 mm trim.
- Slight deviations may occur in the size accuracy (1-2 mm per metre), depending on production.
- To enable you to nonetheless obtain your desired format after the cut, we ask you to leave an excess margin (bleed) of 1 cm around the motive.
- If you need trim marks for the processing, draw those in as well.
- For technical production reasons, it can happen that the printed area doesn't run parallel to the edge of the plate.

Individual motives for individual applications

Several parts of one plate?
 Planning a multi-part motive?

No Problem!
 No Problem!



CUTTING

If you'd like us to carry out the cutting for you, please order the image elements in such a way as to leave a minimum distance of 20 mm between the net formats (i.e. the images which are actually supposed to be cut out of the plate, - measured without the bleed).

In order to make it easier for us to carry out the cut, we ask you to please arrange the parts in rows, to enable us to process them in one go, horizontally or vertically.

Tip:

If you'd like to have contour cuts, please send us a dwg. file for the exact processing, showing the contour to be cut and the position of the individual parts.

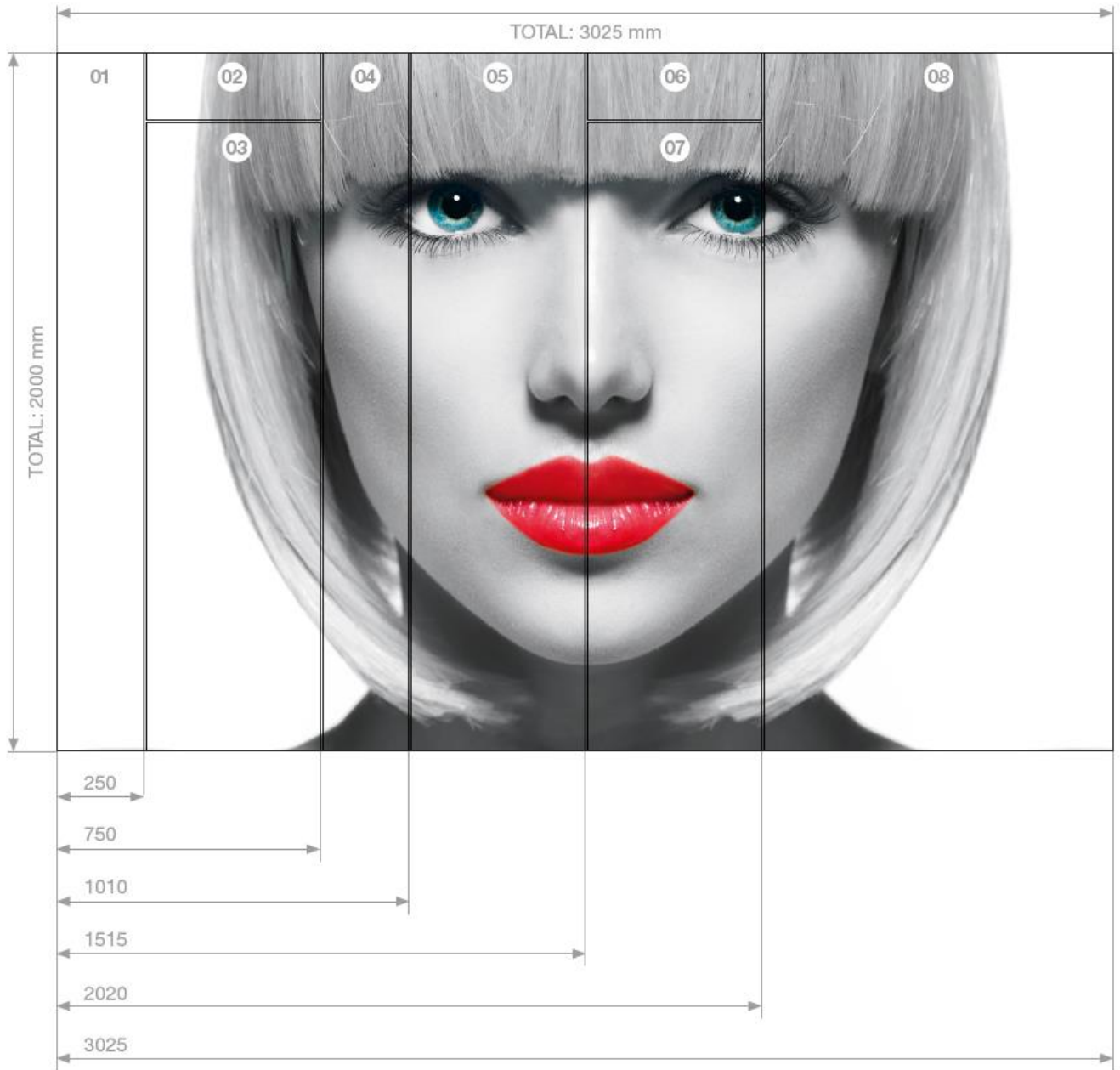
MULTI-PART MOTIVE

Let us know the size of the image parts you need (net = without bleed), preferably by sending us a labelled or numbered sketch. If you have not yet divided the individual images, we're happy to help you do it.

Tip:

Regarding the print file, here too the following applies: a minimum of 5 mm cut oversize per image part!





*All dimensions are given in mm.
 At join: 5 mm everywhere.*

FORMATS

- 01: 250 x 2000 mm
- 02: 500 x 195 mm
- 03: 500 x 1800 mm
- 04: 250 x 2000 mm
- 05: 500 x 2000 mm
- 06: 500 x 195 mm
- 07: 500 x 1800 mm
- 08: 1000 x 2000 mm



Document formats	The documents have been created in their final size 1:1 or 1:10.
Colour	All documents have been created in ISO Coated v2.
File size	The image data has a print size of at least 90 dpi (ideally 180 dpi).
Processing	My data is already rotated in the required orientation in the image processing programme, not converted to a higher resolution.
Image compression	All data has been compressed without loss (e.g. TIFF with LZW).
Completeness	All the image and graphic elements that I have positioned in my document have been sent via online-file sharing solution or e-mail (individualdruck@fundermax.biz). All written texts have either been converted to paths or have already been sent.
Layout	The design drawing or sketch for dividing or for putting my images on the Individualdekor plate are enclosed. The necessary trim marks and bleeds have already been inserted into my file.
Bleed Trim marks	In addition to the dimensions needed (by me), I have left a bleed of 1cm all the way round. If I need trim marks, I have inserted them or explicitly stated how these are to be positioned.

Web-6/15-PR0090GB

KONTAKTUPPGIFTER:**SANDEQ Facade Solutions AB**

- Fundermax Partner Sweden -

info@fundermax.sewww.fundermax.se

+46 44 12 33 30

KONTAKTPERSON**IndividualDekor:****Sander Puijssers**

(Försäljningschef)

sander@fundermax.se

+46 723 41 41 46

